

M&LFHS Newsletter

The monthly newsletter of the
Manchester & Lancashire Family
History Society



June 2023 Issue 38

SOCIETY CONTACTS

Website: - <https://www.mlfhs.uk>

Newsletter editor: - newseditor@mlfhs.org.uk

Bookshop: - bookshop@mlfhs.org.uk

MLFHS Office: - office@mlfhs.org.uk

The Manchester Genealogist: - office@mlfhs.org.uk or editor@mlfhs.org.uk

MLFHS mailing address: Manchester & Lancashire Family History Society,
3rd Floor, Manchester Central Library, St. Peters Square, Manchester, M2 5PD.

SOCIETY BRANCHES

Oldham Branch of MLFHS - <https://www.mlfhs.uk/oldham>

Bolton Branch of MLFHS - <http://www.mlfhs.uk/bolton>

Anglo-Scottish Branch of MLFHS – <http://www.mlfhs.uk/anglo-scots>

<u>Contents</u>	<u>Page</u>
Editor's Comments	2
A message from the Chairman.....	2
A Message from the General Secretary	3
Events/Talks	
Manchester Branch	3
Bolton Branch	3
Oldham Branch	4
Anglo Scots	4
Jewish Genealogical Society of Great Britain.....	4
York.....	5
Projects Update.....	6
Help Desk	6
Website News	6
Orphan BMD	7
UKBMD Update	7
Manchester Archives+	8
North West Sound Heritage	8
North West Film Archive	9
Appendix 1 - 11 th U3A Peak District Family History Conference.....	10
Appendix 2 - Family History Federation Newsletter	11

EDITOR'S COMMENTS

Looking out of my study window at the clear blue sky I wonder how many of you will be doing the same rather than hunching over a keyboard searching for inspiration to knock down another brick wall. At this time of year, in the northern hemisphere, it is time to soak up the sun and relax. At least that is what I have been led to believe. However, that has not been the case for me over the last month: looking for snippets for the newsletter and preparing a talk on the 1939 Register. It is also the season for crown green bowling and I have spent many hours fighting the many weeds that have invaded my allotment plots. However, the urge to carry on finding more about my ancestors lives has been my relief.

I have just read a four page article in Family Tree magazine titled 'Inside the Local BMD Project'. One of the authors is no other than our very own John Marsden, a long standing member of this Society, and coordinator for Lancashire BMD and Cumbria BMD. A recommended read.

Good luck in hunting down those elusive clues.

Barry Henshall

A MESSAGE FROM OUR CHAIRMAN

Hello again everyone,

Every Chairman since Robert Chorlton in 1964 has valued the support received from a seemingly endless supply of volunteers who carry out the activities essential to achieving the aims of the Society. We show our thanks in small ways as the activities proceed as well as when a successful end result is achieved.

However, we do not take such commitment for granted and our trustees arrange a Volunteers Christmas Party every year inviting our volunteer force to attend. Regrettably, this is sometimes not possible for some who live beyond the boundaries of Greater Manchester, but we are able to welcome many who are able to attend so that personal thanks can be delivered in convivial surroundings.

In recent years, since we joined in partnership with Archives+, we have been included in a similar Thank You gathering as part of a National Volunteers Week. This takes place again this year in Central Library on Thursday, June 1st and we stand ready to greet many from our large group of volunteers – we have something between 120 and 150 active at any one time – almost 7% of our registered membership.

Society volunteers contribute in very many different ways according to their inclinations, experience, availability and skill-set. I tried to identify all the tasks we ask you to do and I could provide you with a list, but sure as eggs is eggs – where did that expression come from – I would leave someone's role out and cause offence. I don't wish to do that – you know who you are.

Sadly, I will be unable to join the meeting on June 1st and so, on behalf of my fellow trustees, I would like to thank those of you who volunteer for all the hard work, time and energy you have devoted to MLFHS over this past year.

Please continue the good work. The Society could not function as it does without you.

David

A MESSAGE FROM OUR GENERAL SECRETARY

The best and quickest way to contact the society is by emailing office@mlfhs.org.uk we will then direct you to the relevant person to help you. Our phone is very rarely used.

If possible please use the on-line option on our new website to join or renew your subscription. We use Stripe but you can pay as a guest with your card if you wish.

Have you considered taking out a Bank Standing Order? It means you don't have to think about renewing and you can stop it at any time. Always include your membership number. We can always find it for you should you forget.

There is so much you can learn from our website it seems a shame that members don't make the most of it. From the members area on the website you can make changes to your address and email just log in. It is so easy.

We recently held a talk on how to get the best from the website which was very well received. We are looking at ways to bring this to everyone. Most people were amazed at just what was available on the site and I'm sure went home to try it all out.

If you must pay by cheque please send to:
MLFHS, 17 Fortyacre Drive, Bredbury, SK6 2EZ

DO NOT send it to the office and we no longer take cash at the Helpdesk.
The Click and Collect is now available from our shop.

Best wishes
Elsie

EVENTS/TALKS

Manchester Branch

No meetings arranged for June

Bolton Branch

Ian Trumble, Bolton Museum's Egyptology Curator, will talk to us .

Date and time
Starts on Wed, 7 Jun 2023 19:30 BST

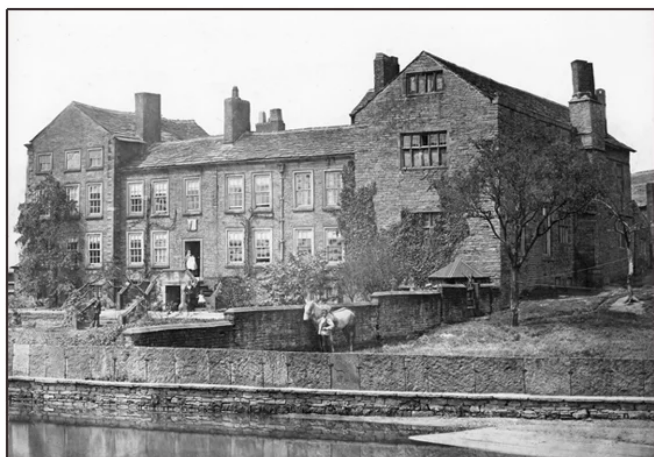
at **Bolton Golf Club** Chorley New Road Bolton BL6 4AJ

Ian Trumble, Bolton Libraries and Museums (boltonlams.co.uk) curator of Egyptology, is to tell us the story of Annie Barlow whose father, James Barlow, owned Barlow and Jones, a successful textile manufacturer. Egypt at that time was the main supplier of raw cotton to Bolton and Annie went to Egypt with her brother in 1888 .

This is a meeting in a room and on Zoom.
Zoomers need to register on the [Eventbrite](https://www.eventbrite.co.uk) website.

Full details of Bolton Branch meetings <https://mlfhs.uk/bolton/events>

Oldham Branch



Royton Hall

The History of Royton Hall

An illustrated presentation given by Frances Stott

Saturday 10th June at 2pm

The talk is about the History of Royton Hall, the families who owned it or lived there, its influence on the village/town and the archaeological dig we undertook in 2005-7.

A library-only meeting in the Performance Space at Oldham Library.

No booking is necessary
Members free; non-members £3

Full details of Oldham Branch meetings <https://www.mlfhs.uk/oldham/events/meetings>

Anglo-Scots



Scottish Sources at the Society of Genealogists.

Sue Gibbons

Date and time
Sat, 3 Jun 2023 14:00 - 17:00 BST

Sue Gibbons is a member of the Society of Genealogists (SOG) and will be discussing the Scottish Resources held by the SOG, another repository of information that may well be of use to us in our research.

This will be a Zoom meeting. the invitation to booked attendees will be sent on Friday 2nd June and again shortly before the meeting.

Book through [Eventbrite](#)

Full details for the Anglo-Scots Branch meetings <https://mlfhs.uk/anglo-scots/events>.

Jewish Genealogical Society of Great Britain

Manchester Regional Group is hosting an event on Sunday 25th June 2023
From 2.00 – 4.30 p.m. at Meade Hill Road Shul, M8 4LP

After the success of our recent Zoom mini-conference, we are once again proud to host an “in-person” Sunday afternoon event where our genealogists and experts will attempt to break down your “BRICK WALLS” and progress your family research to the next level.

Please let us know in advance what names you are researching, and we will try to locate relevant resources ready for your visit and places you are researching.

Non-members £3, JGSGB members free
Refreshments included

Please let us know by email or phone if you intend coming.
Mobile: 07942 375463.
Email: manchester.genealogy@gmail.com

This is YOUR opportunity to access vital records from our reference library which has benefited from recent valuable additions.

We look forward to seeing
you all again!!

York

York Racecourse

Saturday 24th June 2022, 10:00-16:00

Ticket Offer: Two Tickets for £10! (Buy one, get one free!)

Tickets on the day are £10.00 per person, under 16s are free.

[Buy your tickets](#)

The show takes place on Saturday 24th June at York Racecourse, with **Free Talks throughout the day**, **Free Ask the Experts Area**, Societies and Local Archives stands, **Free Goody Bag worth over £10 on entry**, Free Parking, Refreshments available all day, and much more!

The National Archives

Our exciting programme of online talks is for everyone and delivered by experts, specialists and special guest speakers. When you book an event, you are invited to pay what you can – this is optional and entirely at the discretion of attendees. Some of our events remain completely free.

The National Archives also hosts a range of onsite events. To browse these, please see [Events at Kew](#) page. The new season of events April-June 2023 are now available to book.

Get priority booking to all events every month when you subscribe to the weekly newsletter. Get priority booking – sign up to the [mailing list](#) now.

PROJECTS UPDATE

The following update has been posted to Manchester School for the Deaf Admissions
The missing volume has now been indexed and added to the Great Database, thus completing this project.

The following update has been posted to Newspaper Announcements
Added 4,833 BMD announcements from Manchester Courier for 1846 to the Great Database. Transcribed by Linda Bailey, Laura Lewis, Chris Norcross and Chris Hall

The following update has been posted to Baguley Sanatorium Admissions 1930-36
This work is now completed and the data added to the Great Database.

The following update has been posted to Zion Letters
After some delays, scanning has re-started. Two initial volunteers are beginning transcription of previously scanned letters.

The following update has been posted to Miscellaneous Small Projects
Added 2,338 entries in Manchester Collegiate Church Sexton's Books recorded by John Owen 1772-1781 transcribed by Geoff Edge. This work is continuing to cover further years.

HELPDESK

If you have not been into the library post-covid please put a date in your diary and pay us a visit. I think you will find the day very rewarding. If you have any questions, please drop the Society an email: office@mlfhs.org.uk

MLFHS Family History Help Desk Hours: M-F 10:30 am-3:30 pm.

WEBSITE NEWS

Findmypast

New records -

Scotland, People of Nairnshire
Scotland Registers & Records
Anglo-Boer War Records 1899-1902
New pages from Kent to Kensington

Further details can be found [HERE](#)

FamilySearch

The following new data sets have been added

Collection	Indexed Records
Illinois, World War II Draft Registration Cards, 1940-1945	2,118,449

New York, New York City, World War II Draft Registration Cards, 1940-1947	2,332,634
Hawaii, Marriages, 1826-1954	116,852
Australia, Victoria, Wills, Probate and Administration Files, 1841-1926	40,739
Arkansas First Draft Registration Cards, 1940-1945	140,609
Sweden, Stockholm City Archives, Index to Church Records, 1546-1927	1,694
Tennessee, County Marriages, 1790-1950	755,396
Mexico, Puebla, Catholic Church Records, 1545-1977	9,187
Costa Rica, Catholic Church Records, 1595-1992	5,947
California, passenger and crew lists at various ports, 1907-1956	93,173

ORPHAN BMDs

If you have any BMDs you no longer want then why not consider dropping them off at our Helpdesk or you can send them to:

M&LFHS

61 Queens Road, Urmston, M41 9HF

If you wish to keep your certificates then you can send scans, preferably as a PDF to office@mlfhs.org.uk and they will be passed on to me. If you have problems sending scans to this address then please contact me at newsletter@mlfhs.org.uk and I will suggest an alternative means of forwarding the PDF files.

Currently the numbers of Orphan BMD index entries are:

Births 1,357

Deaths 3,648

Marriages 6,388 (3,194 certificates)

This ignores any entries duplicated because of alias names or other variants.

UKBMD UPDATES

Marriages:

1 for Hanbury-with-Draycott-in-the-Clay, St Augustine, registers at Newcastle-Under-Lyme (2010-2010)

Births:

1,245 for Stoke, registers at Stoke-On-Trent (1971-1976)

Replaced 3,509 for Yoxall, registers at Lichfield (1837-1862) for corrections and to add mother's maiden name

Why not visit the Manchester Archives+ [website](#) where you can sign up for their Blog via e-mail and also delve into a huge collection of subjects. There are 25 categories to choose from.

Whalley Range: The History of Your Area



Exploring our local surroundings can reveal hidden meanings in familiar places. It's possible to casually pass by a historical landmark or an intriguing site on the way to the shops, or even live in a house that was once owned by a renowned industrialist. By delving into the history of our area, we can feel a sense of connection to the past and gain personal insights about our place within it.

In this article, my goal is to explore the history of Whalley Range by delving into the archives of Manchester Central Library. I hope that this exploration inspires you to embark on your own research on your local area. Who knows what revelations you might uncover just beneath the surface?

The full article can be found [HERE](#).

NORTH WEST SOUND HERITAGE

Unlocking our Sound Heritage

Thousands of cassettes, open reels, CDs and MiniDiscs are sitting in archives, museums, libraries and in people's homes all over the UK. All kinds of unique live music, radio and conversation are recorded on these tapes and discs. We've already lost many of the people captured on them. And the British Library estimates that we have fifteen years to preserve the sounds themselves.

That's why the British Library has received funding from the National Lottery Heritage Fund to establish Unlocking Our Sound Heritage, an exciting new national project to save thousands sounds which are at risk of being lost forever.

Archives+ is the hub partner for the North West region, which covers Cheshire, Cumbria, Greater Manchester, Lancashire and Merseyside. We'll be digitising around 15,000 recordings on 5,000 cassettes, reels and optical discs held all over the region here at Manchester Central Library.

This is a fascinating site providing a flavour of times gone by. If you are a food and drink enthusiast then discover what not to eat and drink before a performance!

Follow on Twitter - [@archivesplus](#).

Find more information [here](#). Enter your email address to follow this blog and receive notifications of new posts by email.

NORTH WEST FILM ARCHIVE

Welcome to the [North West Film Archive](#), the professionally recognised public home for the moving image heritage of the North West of England.

WHO WE ARE

From historical footage and home movies to newsreels and adverts, we find, preserve and share over 50,000 items of film and video, for public, educational and professional use. We love film and how it can open a window into the past and the present in ways that can be powerful, moving and unexpected.

Part of Manchester Met, and based within Manchester Central Library's Archives+ partnership, we are a specialist resource dedicated to saving and growing our region's rich filmed history.

WHAT WE DO

Do you need some footage for teaching, broadcasting or an artistic or community project?

Do you have film of our region's people or places that needs looking after?

Whoever you are, if you need a professional and friendly service, we're here to help.

We offer:

- research support and loan or licence of footage (including for professional broadcast)
- bespoke learning and teaching support
- opportunities to hire or watch unusual and interesting films, with a local and historical theme
- opportunities for community engagement and collaboration
- a home for the region's film and video, where moving images are professionally preserved, stored and made available, for now and for the future

This is a site well worth visiting The NWFA was set up in 1977 and preserves moving images made in or about Greater Manchester, Lancashire, Cheshire, Merseyside and Cumbria and offers a variety of access services to users in the public, academic and commercial sectors.



<https://www.facebook.com/MandLFamilyHistory>

and Twitter



M&L Family History@MLFH

11th U3A Peak District Family History Conference

Saturday 16 September 2023 at the Palace Hotel in Buxton



Presents.....

Mary Evans – ‘Chasing those Brickwalls!’

Dave Annal – Death & Taxes

Jackie Depelle – “Digging into the Parish Chest”

Dr Penny Walters – “Why the Welsh left Wales”

Tickets: £30. Book early to avoid disappointment - it's always very popular.
Includes talks, refreshments & 2-course finger buffet lunch

Parking:

Blue Badge holders – may park or drop off at hotel

Others - use side streets or the pay & display car parks

For car parks in Buxton see: <https://en.parkopedia.co.uk/parking/buxton/>

Exhibitors:

Once again, about 15 exhibitors will be there – old friends & new:

We plan to offer delegates a free goody bag and a free prize draw again.

To book your place, please complete the booking form on this link:

<https://forms.gle/mXnsgpBhQpmafuNU6>

Please put your surname and postcode as a reference if paying by BAC

[So we can match your payment with your form.]

Tickets will be issued at our reception desk on the day, not posted.



FAMILY HISTORY Federation

REALLY USEFUL Bulletin

No 33

May 2023

Supporting Family Historians since 1974

Welcome to the May edition of the *Really Useful Bulletin*

inside find...

Lead article is *Reconstruct Your Ancestors' World with Google*

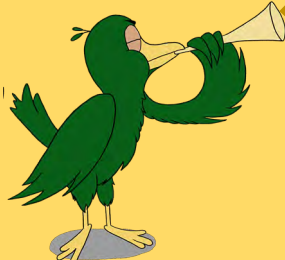
plus news from local FHS and from the Federation

Friendly family history societies on Friday.
Saturday will be workshops and talks.

Order your ticket before 31st August at the special subscribers' rate of £12.
Don't forget to add RUB2023 for the shop to calculate your discount—click here:
www.fhf-reallyuseful.com/

Those who have attended the show previously will have received a very special discount rate to book for this year's event.

Get involved
—see inside.



Supporting Family Historians since 1974

FAMILY HISTORY Federation

We ❤️ Family History

FHF REALLY USEFUL Family History Show

ONLINE EVENT 2023

Full Price
TICKETS
£15

RU Bulletin Subscribers
EARLYBIRD PRICE
until 31st August

ONLY £12
Using Checkout Code
RUB2023

Interactive **WORKSHOPS** : Knowledgeable **SPEAKERS**
Friendly **FAMILY HISTORY SOCIETIES**

SAVE THE DATES

Friday 17th November 10am-10pm and
Saturday 18th November 10am-6pm GMT

LEARN MORE and **BUY NOW** at
www.fhf-reallyuseful.com



Really Useful Bulletin

Reconstruct Your Ancestors' World with Google

Lisa Louise Cooke

Google's empire includes a powerful collection of free online tools that are brimming with historical information. We can flesh out the story of a family tree by using a variety of Google tools and bring it all together in a compelling video that can be shared with your family.

Make a List of "Searchables"

Compiling a list of people, places and things associated with you ancestor is a great way to start.

Google Search: https://www.google.com/advanced_search

Information pertaining to your family could be on a university website or on the blog of a cousin you've never met before, and everything in-between. You never know where information may be stored, but Google can find it.

What to look for: Anything and everything! Here are the most popular search operators that will help explain to Google what you are searching for:

- ◇ *Quotation marks:* any word or phrase you put in quotations is required to appear in all search results, in the exact order and spelling provided (e.g. "newspapers" "Des Moines")
- ◇ *Minus sign:* removes search results that contain the unwanted word (e.g. -Abraham)
- ◇ *Asterisk:* indicates that there may be one or two words between specified words (e.g. "city * directory")
- ◇ *Numrange search:* requires that all the search results include a number that falls within the specified range (e.g. 1842..1858)

Hidden Gem: Google Alerts at <https://www.google.com/alerts> Since information is being uploaded to the web constantly, it's nearly impossible to keep up on new webpages that may contain information about your family tree. By setting up a *Google Alert* for the searches you have already conducted, you won't have to go out every day on the web and search to see if there is anything new. Instead, Google will do the work for you. You will need to log in with your free Google account and provide an email address.

Google Image Search: <https://images.google.com>

When you're looking for imagery, Google Image Search will give you a more targeted search that zeros in specifically on images, no matter where they reside on the web. Users can search for photos and images by the keywords in the filename of the image, the link text pointing to the image, and text adjacent to the image. You can also upload a photo to search for exact or similar images.

What to look for: Photographs of places where your ancestors lived and visited (buildings, roads, landmarks), recorded events (e.g. the Great San Francisco Earthquake of 1906), cemeteries and tombstones, and photos of anything and everything related to your family tree. Image search is limited to photographs. You can use the Google image search to find maps, drawings, engravings, paintings, old postcards, charts and graphs, Clipart, and more.

Hidden Gem: After you run a search query, click the *Tools* button on the results page. A hidden secondary menu will drop down providing you with many more filtering options; the *Type* and *Time* menus are of particular interest.

Further learning: Watch my video *The Best Ways to Search for Photos with Google Images* and read the article at <https://lisalouisecooke.com/2021/03/24/google-image-search/>



Google Books: <https://books.google.com>

In 2010, Google estimated that there were about 130 million distinct book titles in the world. The company's state goal was to scan all of them. Five years later, in 2015, it was announced that over twenty-five million of those titles have been scanned. Optical character recognition (OCR) was applied to the digital collection, making it searchable.



Really Useful Bulletin

What to look for: names, places, organisations, businesses, record types, etc. Review previously found genealogical documents and make lists of searchable information.

Hidden Gem: Maps photographs, engravings, artwork, charts and graphs, and other imagery can be found quickly by beginning with a keyword search, and then clicking the thumbnail button. Doing so will display multiple pages on the screen at one time making a visual search very fast.

Further learning: Watch my video *Ten Surprising Things You Can Find at Google Books* and read the article at <https://lisalouisecooke.com/2020/10/26/10-surprising-things-google-books/>



Google Scholar: <https://scholar.google.com>

If you are interested in focusing on scholarly works on a particular topic or family, Google Scholar is the tool for you. You can restrict your searches to courts, universities, academic publishers and other scholarly content providers with the powerful free website. Google Scholar allows you to search all scholarly literature, and explore related works, citations, authors and publications. It can also help you keep up to date with recent developments in any area of research with the built-in link to Google Alerts.

What to look for: Run searches just as you would with Google.com, utilising search operators. Once you locate a resource, look for the source citations and follow them to additional relevant sources.

Hidden Gem: A “Create Alert” button is conveniently located on Scholar search results pages. This makes it a breeze to put Google to work by setting up a Google Alert for you (you must be signed into your free Google account). Google Alerts will continue to run your search query for you on an ongoing basis. When a new or updated webpage that matches your query becomes available, it will be emailed to you.



Google Patents: <https://patents.google.com>

Launched back in 2006, this search engine indexes patents and patent applications from the United States Patent and Trademark Office (USPTO) as far back as 1790, and the European Patent Office (EPO), and World Intellectual Property Organisation (WIPO) back to 1978. [It also includes UK ones.] The public domain documents, totalling approximately eight million, that can be retrieved from each of these databases include the entire collection of published patent applications and granted patents. OCR has been applied to the pages making them keyword searchable.

What to look for: All US patents and published patent applications.

Hidden Gem: When you find a patent of interest, click the title to access it. You'll find a good deal of clickable and valuable information here including exportable source citations, the original image, and even a link to all patents by that inventor.

YouTube: <https://www.youtube.com>

What to search for: ancestral locations, organisations, businesses, schools, events and names. In fact, anything having to do with the lives of your ancestors.

Hidden Gem: While you may be tempted to search for the names of your ancestors, unless they were famous, you are likely to have more success by focussing on the places, events and organisations that surrounded them. Remember, your ancestor could be a bit-player in someone else's video! Visit Lisa's Genealogy Gems YouTube channel: <https://www.youtube.com/GenealogyGems>

Further learning: Watch my video *How to Find Your Family History on YouTube* and read the article at <https://lisalouisecooke.com/2021/05/26/how-to-find-family-history-on-youtube/>



Really Useful Bulletin

Google Earth Pro: <https://www.google.com/earth/download/gep/agree.html>

The Google Earth Pro software is freely available for to everyone. It contains a tremendous amount of geographic data, including historical maps that can help you pinpoint ancestral locations and make the connection with that same location today. In addition, Pro features include HD quality imagery and MovieMaker built in. Google Earth is different from the other Google tools because it is software that you install on your computer. **Be sure to use the free software** and NOT Google Earth for the Chrome web browser or the mobile app.

What to look for: ancestral location names, historic maps, corresponding modern-day street addresses, etc. Here's how to find and save the Rumsey Historic Maps that are included in Google Earth:

1. In the *Layers* panel, click *Gallery* and check the box for *Rumsey Historical Maps*.
2. In the *Search* box, type in a location where you would be interested in finding old maps and click the *Search* button. (Typically, you will be flown in fairly close to the ground. Zoom out until you see some of the Rumsey map gold medallion icons appear on the map. Also, if you are too high up, the icons will not appear. In that case, zoom in closer.)
3. Once you can see the Rumsey icons on the 3D Viewer map, hover your mouse over each one to see the name of the map and the year it was created.
4. Once you find one you want, click the Rumsey icon to reveal the pop-up box.
5. In the pop-up box, click the thumbnail map image. This will display the historic map on the 3D viewer. You will also see the map file highlighted in the *Places* panel in the *Temporary* folder.
6. To save the map to your *Places* panel permanently, click the file and drag it from the *Temporary* folder, and drop it on to *My Places* or into the desired folder.
7. Save the *Places* panel by going to the menu, and clicking *File>Save>Save My Places*.

Hidden Gem: In addition to the initial collection of maps, here's how to unlock another 300+ maps:

1. In the *Layers* panel, click *Gallery>Rumsey Historical Maps*.

2. Click a Rumsey icon on the map.
3. Toward the bottom of the pop-up dialog box, click the link that says *Download Links to All Rumsey Historical Maps*.
4. A file called Rumsey Historical Maps will appear in the *Temporary* folder at the bottom of the *Places* panel.
5. Click the file, drag and drop it into the *Historical Map Collection* folder that you created.
6. Save your *Places* panel by going to the menu and clicking *File>Save>Save My Places*.
7. Click the plus sign next to the Rumsey Historical Maps file to open it and reveal all the maps inside. Use these just as you would the maps you found in the *Layers* panel.

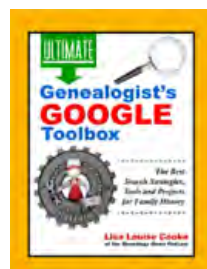
The above notes accompanied one of Lisa Louise's talks at RootsTech which used UK place research for the Google Earth Pro section. Well worth finding to watch while using the above. Google has more than I am sure some of us realised!



Lisa Louise Cooke found her passion for family history at her grandmother's knee at the age of eight. She is now the owner of *Genealogy Gems*, a genealogy and family history multi-media company founded in 2007. She is producer and

host of the *Genealogy Gems Podcast*, the popular online genealogy audio show available at www.GenealogyGems.com, on your smartphone's native podcast app, and through the Genealogy Gems app available through app stores. Her podcast brings genealogy news, research strategies, expert interviews and inspiration to genealogists in seventy-five countries around the world, and has been downloaded nearly four million times. She also produces the weekly genealogy YouTube live show *Elevenses with Lisa* at the Genealogy Gems YouTube channel.

Lisa Louise Cooke is the author of several books including *The Genealogist's Google Toolbox*, 3rd edition available from her online shop. Genealogy Gems is based in Texas, USA.





Really Useful Bulletin

Family History Federation's

Really Useful Family History Show 2023

Call for Papers



Local, Regional and Specialist Topics



**We've determined our online
FHF REALLY USEFUL Family History Show
will be bigger and better in 2023.**

**What's more, we want YOU to be a major part of our
success!**

So, with that in mind, please consider the following:

- ◇ Are you especially knowledgeable regarding a particular aspect of local or regional family history?
- ◇ Do you enjoy sharing your expertise with others?
- ◇ Could you prepare an inspiring 10-20 minute recorded talk on your chosen subject?

If you answered YES to the above, we would most definitely like to hear from you!

Please email suggestions@familyhistoryfederation.com and put your idea for a talk topic in the subject line, plus any other information you'd like to share, and we'll get back to you as quickly as we can.



*PS - Don't worry if you're not confident using technology –
we're willing and able to assist!*

Steve Manning,



Really Useful Bulletin

Family History Federation's

Really Useful Family History Show 2023

Workshops



WOULD YOU LIKE TO RUN A WORKSHOP?

We are inviting presenters to run workshops at our forthcoming 2023 FHF Really Useful Show. Workshops will be via Zoom on Saturday 18 November between 10am and 6pm.

TOPICS: Any topic of interest to family and local historians.

Workshops will be live presentations using Zoom and lasting no more than 40/45 minutes.

There will be two groups for the audience:

Participants who wish to interact with the facilitator of the workshop will be restricted to a maximum of twenty people.

Observers will only be able to watch and listen. Numbers will not be restricted as this will be relayed via a webinar.

There will be no open Q & A as participants only will be the discussion group.

Workshop: content will not be recorded for further viewing. Facilitators need to make the workshops interactive and not just provide a shorter talk.

Workshops will be scheduled throughout the day and will start promptly at the published times.

We encourage facilitators to provide workshop hand-outs or exercise material which will be available for download prior to the workshop starting on the facilitator's workshop booth page for the whole duration of the show.

Some tips to compiling and facilitating a workshop

- ♦ Initially decide the concept you wish to put over. You will not be able to cover everything. Set your goal at the start about what you want to achieve.
- ♦ It is all about visual collaboration. Import and view any type of content and files in a single place. Display your ideas from different angles with several view modes.
- ♦ It is recommended that facilitators make use of the PowerPoint whiteboard facility to keep the workshop live.
- ♦ Communicate visually - "Questions" offers a single channel of communications to harness collective intelligence instantly.
- ♦ Time your workshop.

A fee will be paid.

Interested? For further information, please email

education@familyhistoryfederation.com





Family History Societies



Hampshire Genealogical Society

Conference Day

including Annual General Meeting

We are pleased to announce the details of our

Annual Conference Day

Saturday 17th June 2023

Littleton Millennium Memorial Hall

The Hall Way, Littleton, Winchester SO22 6QL

Tickets—£10.00

We will be joined by three experts who will be giving talks offering advice and information on how to make the most of your research.

Open to members and non-members you will also have opportunity to browse the HGS Bookstall.

Programme

- | | |
|---------------|---|
| 09.30 -10.00 | Registration |
| | Tea, coffee and biscuits available on arrival |
| 10.00-10.15 | Welcome |
| 10.15-11.15 | Andy Skinner – A Titanic Conspiracy! Was the sinking of RMS <i>Titanic</i> an elaborate insurance scam, did poor-quality rivets sink her and was a raging fire responsible for her sinking? This talk looks at the conspiracy theories associated with <i>Titanic</i> . |
| 11.15 – 11.30 | Comfort break |
| 11.30 – 12.30 | Annual General Meeting (members only) |
| 12.30 – 13.30 | Lunch |
| 13.30 – 14.30 | Jane Glennie – Violet's Titanic Escape
Jane talks while in character as Violet, a stewardess in first class on board the <i>Titanic</i> for its maiden voyage in April 1912. She describes her job looking after the people in first class, as well as what happened to her as she survived the ship's sinking. |

14.30 – 15.00 Afternoon tea/coffee and pastries

15.00 – 16.00 **Lucy Browne – *Rock and Tempest, Fire and Foe***

Lucy's talk explores merchant seamen in war and peace, identifying, tracing and finding out more in published, online and archival sources. She describes exploits of her own seafaring ancestors as well as other people's over a period spanning the heyday of steam ships, two World Wars and the advent of satellite navigation.

16.00 Wrap-up—Nick Barratt, President

16.15 Close

How to Apply for Tickets

Tickets cost £10.00 and can be purchased at www.hgs-familyhistory.com using PayPal or debit/credit card.

Members wishing to attend only the AGM should inform the membership secretary to ensure they have a place.

E-mail: membership@hgs-online.org.uk

Website: www.hgs-familyhistory.com/

Conference details: www.hgs-familyhistory.com/2023/03/conference-day-agm-2023/

Facebook: www.facebook.com/HGSfamilyhistory



*The Millennium Memorial Hall,
Littleton*



Family History Societies

London Westminster and Middlesex Family History Society



HISTORY FROM BELOW IN ST LUKE OLD STREET

By Elizabeth Burling

The 1861 census showed that nearly half of the 4.3 million children aged

between 5 and 12 years old received no schooling whatsoever. The Elementary Education Act of 1870 allowed for the creation of school boards with the aim of providing education for these children. However, the idea was not universally popular. It was thought that mass education might not be a good idea for the lower classes and could lead to indoctrination, revolt and other bad things. The Church of England, for example, which was educating about a quarter of the children, did not want to lose its influence on them. Nonconformists also had schools and did not want Anglican teaching for all, so it was agreed that board schools' provision for religious teaching had to be non-denominational. Nevertheless, in areas where there were more children than school places already available, school boards were created. They were funded using a 'requisition' and local rates. Education was not free and parents had to pay fees for their children to attend, although school boards could pay those of poor children.

The vast need of children in London meant that the London School Board was divided into ten districts: Chelsea, City, Finsbury, Greenwich, Hackney, Lambeth, Marylebone, Southwark, Tower Hamlets and Westminster. Many board schools were built in these areas and the archive of the London School Board at London Metropolitan Archives (LMA), Ref: SBL, contains plans of these and much more. The Finsbury district included the parish of St Luke Old Street, which lies just north of the City of London and is now the south-eastern tip of the London Borough of Islington. It was an area mired in poverty. The *Shoreditch Observer* of 1 June 1867 describes it as *a very unsavoury locality ... which is inhabited by a portion of the poorest, the most illiterate, and not least criminal of the population of the great metropolis*. If your family came from this area, you might think that there will not be any records of the children but there may well be!

A parochial school (founded as a charity school) had been operating in the area since 1698. A Presbyterian minister started another in 1758—both are still going—and several nonconformist schools had been opened by the strong Methodist and Quaker presence in the area. These were not enough to cater for all of the local children, and the School Board for London built several more schools quite a few of which can still be seen today. If you had ancestors in this area, you might well be able to find out more about their school life than just the buildings they went to school in.

The parochial school, now called St Luke's C of E Primary School, is in Radnor Street. It was founded in Golden Lane as a boys' school and started admitting girls from 1761 but the site in Golden Lane soon became too small to accommodate all the children wishing for an education. A new school, known as St Luke's Parochial School, was built in the 1870s on Old Street with a further move to Radnor Street much more recently. The school's archive is split between two different collections at LMA and includes admission and discharge registers starting from 1897-1939, logbooks from 1900-1961 and general minutes from 1820-1941. The registers usually show a child's name, date of admission, date of birth, address and the name of their father together with information about their leaving. Previous and next schools are sometimes named and there might be information about vaccination status. Logbooks were kept by the head teacher and include anything worthy of note, such as accidents, teacher absence, and maybe national and local events. Logbooks are not usually indexed but can be very interesting. There are some old photographs and more about the history of St Luke's school on its website here: <https://www.st-lukesislington.co.uk/history/>

The Sunday School Union had been set up in 1803 for the London area and was particularly important in helping to educate poor children who perhaps had to work during the week. By 1808, it was reported that some 900,000 children had been admitted to Sunday Schools. The Golden Lane Sunday School was attached to the City Road Methodist Circuit, whose archive is at LMA. In this there are 'Accounts of proceedings' 1798-1818, which are similar to logbooks. Also records of the Radnor Street Schools (which took over this school), with Sunday School logbooks 1821-1835 and admission registers 1877-1959, amongst other items.



The Chequer Street School has its origins in the Hope For All Sunday School, attached to the Methodist Chapel in Chequer Alley (now Chequer Street) and attended by about 500 children a week in the 1860s. By 1867 the building was fitted up as a chapel

and infant day school. It was intended to be a Ragged School (to provide free education to poor children) and in 1871 the schools were noted to be 'open free every day in the week, twice in the evening and all day on Sunday'. The London School Board acquired the schools, still also known as the Hope Schools for All in 1874, with the intention of improving the existing building and enlarging its playgrounds. The school became Chequer Street School in 1877 and was rebuilt and enlarged in 1888. Children from the school turn up in the local newspapers, for example in 1889 a story was reported in the *Blackburn Standard* and elsewhere

The Really Useful Bulletin welcomes contributions from all Federation member organisations.

It is opportunity to promote *your* society to the extensive Bulletin readership.



Family History Societies

concerning Lucy Binden, who attended the school. Lucy's mother made paper bags for a living and had been forced on several occasions to cut off Lucy's hair in order to make it into paste brushes for her work, as she could not afford to buy any. The *Daily Mirror* of 29 June 1911 has a photo of seven out of fifteen boys from the school who had been invited to King George V's coronation party at Crystal Palace but who had no boots or decent clothing. The image shows them putting on their new footwear, which was provided thanks to readers of the newspaper. An accompanying article describes how their old clothing was tied together with bits of string and little more than rags. Twelve girls at the school also received new clothes – blue frocks with white pinafores – to wear to the party. From 1951 the school was known as Northampton Secondary School. Minutes of the Schools and Chapel dated 1865-1897 survive, as do records of the board school from 1897-1928, which are in the archive of the London County Council Education Office at LMA.

Bath Street School opened as a Board School in 1872 on the corner of Featherstone Street and Bunhill Row with a low school fee rate intended to attract 'a lower class of children' and indeed, it was soon educating 'ragged children'. A collection of letters in the *Islington Gazette* in September 1872 shows that other local schools, especially the voluntary school in Radnor Street, were upset that their schools were being 'crippled' in consequence of this one opening. There were ongoing debates regarding whether the number of children attending as against those on the books shows that this new school was a failure or not. Bath Street School was described as the largest in the district by 1895. The school was renamed Moorfields Primary School in 1951 – this shut in 2004 and was succeeded by Prior Weston Primary School. Surviving records 1892-1939 of Bath Street School at LMA.



Central Street Board School opened with accommodation for 841(!) children in June 1874. The new buildings included an enclosed internal playground for the infants and a caretaker's house. The school closed during WWII and local children were evacuated. After the War, it reopened as Frank Barnes School for the Deaf. In 1979, St Luke's Parochial Trust bought the old building and it has now been converted into a community centre, which it still is today. Records dating from 1874-1939 are at LMA. Schools were often split into different parts and records might not cover all children. For example, the logbooks of this school cover boys from 1874-1933, girls from 1913-1932 and infants from 1874-1918 and 1928-1939. The registers only cover boys from 1911-1939 and infants from 1938-1939.

Moreland Street Board School was the next to be built, opening in 1877, and it is still educating local children today.

Records from 1877-1973 (not all of which can yet be seen) are at LMA. Apart from registers and logbooks, this archive also includes a 'Guard book' dated 1895-1912 and a punishment book dated 1943-1966.



The Baltic Street Board School seems to have opened in the 1890s. It was one of 14 schools mentioned in an article in the *Echo* of 18 November 1903 as being in urgent need of gifts of clothes and boots for the children. The building is now the Golden Lane Annexe of the London College of Fashion. LMA holds records 1900-1939. You can still see signs above the doors showing ones to be used by

infants, girls and boys. These are all parts of the same building but other schools may have had separate buildings, sometimes in different streets, which all have the same school name. A nearby door at Baltic Street has the sign 'Cookery Centre', which is likely to have been an evening school for working children. You can see all of these on Google Street View if you are not near enough to visit.

Of course, not all schools were for poor children. The Middle Class School of London was founded in 1866 in the former Huguenot Hospital on Bath Street. It was intended, as its name suggests, as a place where boys whose parents were slightly more well off could be educated. It moved to Cowper Street in 1869 and was renamed as Central Foundation School in 1890 (there is a sister school for girls in Tower Hamlets). In the 1970s the school acquired the Whitfield Tabernacle, which stood on the far side of the playground, for use as educational space. The school has a website with information about its history and alumni: <https://www.centralfoundationboys.co.uk/>

Our Parish Guides are written by family historians for family historians. They show the main records of our ancient parishes and where these can be found, whether they be original hard-copy records or on the internet. This brief history of St Luke Old Street shows some of this. Our Parish Guide to St Luke Old Street will be published in July 2023 and can be obtained from our shop on Parish Chest.

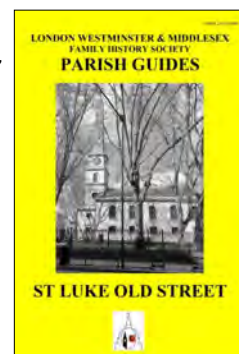
Sources

Elementary Education Act 1870 at Wikipedia, https://en.wikipedia.org/wiki/Elementary_Education_Act_1870

British Newspaper Archive at Findmypast
London Metropolitan Archives

Our society's website: <https://www.lwmfhs.org.uk/>

Our shop at Parish Chest: <https://www.pari chest.com/london-westminster-middlesex-fhs-4577.php>





Wednesday 22 November: ***Flanders and the Somme - then and now*** by Ian Everest. Ian Everest made his first visit to the battlefields of the Great War over thirty years ago to visit the grave of his Great Uncle.

Instructions on how to join the zoom talk will be circulated to members the week before the event.

For more information about the events or the Society
please contact our Membership Secretary at
membership@nfhs.co.uk or go to our website at:
<https://www.norfolkfhs.org.uk/>

To join the Society please go to: <https://www.norfolkfhs.org.uk/membership/register/>

A Useful Download to Try!

And no messing about trying to find anything online—it is all on your own computer. Free, safe and useful. Give it a try!

UK Parish Finder

[Download this program](#) (members only)


Not a member? [Register Here](#)

GUARANTEED 100% CLEAN

Our Files **DO NOT** Contain Adware, Spyware, Viruses, Toolbars Or Any Other Third Party Software

Non Members can download a free copy [here](#)

[Click here](#) for lots more educational software

[illegible]



Really Useful Bulletin

News from the Federation



Saturday 24 June—Knavesmire Centre, York Racecourse

The Federation's *Family History Books* will have its ever-popular stall open throughout *The Family History Show* at York.

Last year, the stall was particularly busy with the first sale of the day taking place before the show officially opened! Yes, family historians are keen to add to their home libraries and know where to buy books from a variety of publishers, including those published by Family History Books which provide reliable, factual help with research topics and conundrums.

A very popular title is ***Family History Research Challenges and How to Solve Them*** by Ian Waller—everyone has a brick wall or three; this book has some brilliant ideas!

You might find ***Introducing Manorial Records: Unlocking the Mysteries of the Manor*** a book you cannot be without as your research gets further back in time or you might be examining a box of unlabelled photographs and need ***Dating by Design*** (two volumes covering different periods of time) to help you date and therefore identify subjects.

Providing the delivery company meets dates, the new book by Anthony E Trice ***How to Discover Your Family History Using Free Resources*** will be available for the first time on the stall!

Family historians each have their idea of what is a good book; the stall will have something for everyone.

Come along, browse through a huge range of specialist books—and replenish your reading matter.

The bookstall can process **payments by card**, too, so don't worry if you are short of cash.

Picture: bookstall at *Family Tree Show Live* at the iconic Alexandra Palace.



Really Useful Back Page

Family History Research Aids from the Experts



Parish Chest, a service from the Family History Federation, has over sixty family history societies and some twenty-plus traders, at a one-stop online shop, offering a wide range of family history materials in some sixteen categories including:

- *Parish register transcriptions and more from local FHS*
- *Memorial inscriptions information from gravestones across the country, compiled by local FHS*
- *Nonconformists: Baptists, Wesleyans, Independents, Quakers and many more nonconformist lists*
- *Wills and Probate Indexes of wills and administrations*
- *Folders, printing facilities, giftware*
- *..and more!*

Societies and suppliers regularly add new lines, so visit to see what is there to help you add to your family tree.

www.parishchest.com

Societies and others interested in joining Parish Chest should initially contact:

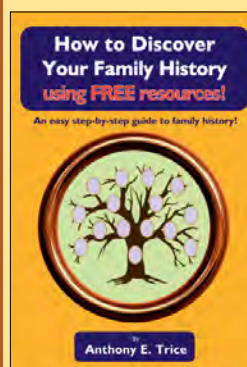
admin@familyhistoryfederation.com



FAMILY HISTORY BOOKS

www.familyhistorybooksonline.com

Family History Books (FHB) is an online bookshop and publisher; it is owned by the Family History Federation and the aim is to provide a service to the genealogical community. Family History Books offers a range of relevant titles relating to family history research.



The latest title, coming out in June, is ***How to Discover Your Family History Using Free Resources***, by Anthony E. Trice. £9.95 plus p&p; it will be in the [online shop](#) as soon as delivered from printers (early June). It provides researchers with many ideas on using free websites and how to spend less!

In addition to its [online shop](#) FHB can also be found at major live family history events around the country. Do visit the stall to see all the latest titles available. The stall is always very popular!

The bookshop will be at *The Family History Show* at York on 24th June so do come, browse the books—and buy!

Happy browsing!

Please explore the range, and place your orders, at

www.familyhistorybooksonline.com



The REALLY USEFUL Family History Show

17-18 November 2023

Bookings now open: www.fhf-reallyuseful.com



FFHS does not exercise any control over the content of external website links in this Really Useful Bulletin. It is not responsible for the content or quality. Nor does FFHS endorse any companies or products advertised.
Copyright © 2023 Federation of Family History Societies. All rights reserved.

Family History Federation P O Box 62, Sheringham, NR26 9AR

Family History Federation is the operating name of the Federation of Family History Societies.

The Federation of Family History Societies is a Company Limited by Guarantee.

Company Number 2930189 (England & Wales) Registered Charity Number 1038721

Registered Office: 2 Primrose Avenue, Urmston, Manchester M41 0TY